

New South Wales State Election 2023



Australian Institute of
Landscape Architects

A climate resilient, greener, connected, regenerated New South Wales

Landscape Architects live and work on the lands and waters of all First Nations people across a network of 120 local Aboriginal Land Councils (LALCs) in New South Wales.

We care deeply and recognise their connection to Country.

We value walking side-by-side with all First Nations people and we acknowledge our role in advancing respectful and authentic reconciliation through the design of our places, cities and regions.

A climate resilient, greener, connected, regenerated New South Wales

The Australian Institute of Landscape Architects (AILA) leads a dynamic and respected profession. Our 3,000 members are driven by AILA's values and our advocacy for the creation of healthy communities, connected green infrastructure, liveable and regenerative cities and regions.

The AILA Manifesto is a call to action for the next term of the State Government to address key issues that concern our profession.

AILA has been advocating and working with the NSW Government for over 30 years. Continuing the planning and delivery of Public Domain, Housing, Health, Education and Transport infrastructure

will guarantee NSW remains an economic hub for our Nation.

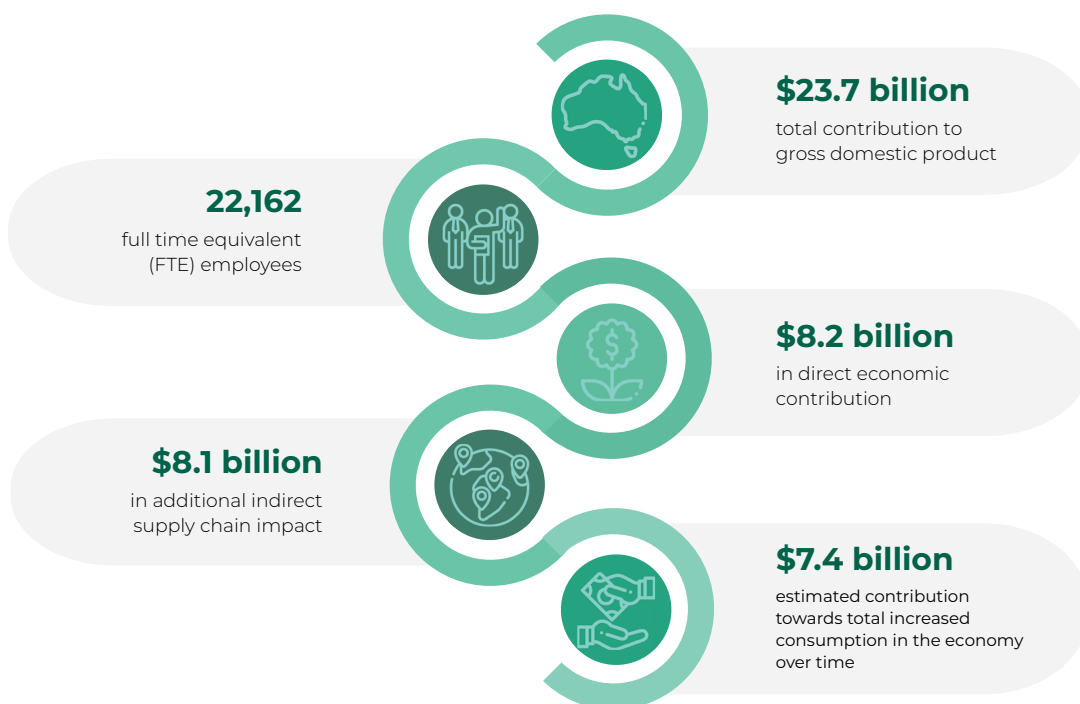
Setting a baseline requirement of resilience, regeneration, and making a climate positive agenda will ensure that these initiatives build a legacy with our future generations in mind.

The Landscape Architecture profession, via AILA, are ready to work with you to develop the right frameworks, policies, and strategies to ensure NSW drives a nation leading, climate responsive agenda. To this end we highlight AILA's top four priorities for the next NSW Government.





Economic value of the landscape architecture industry to the Australian economy



Additional benefits of WELL DESIGNED SPACES

Landscape architects generate additional economic, environmental, social and cultural benefits as a result of their work in the design, construction and maintenance of private and public use spaces.



Infographic: atticusnow, 2021, draft. Economic contribution of the landscape architecture industry report. AILA, p.5





Climate & Biodiversity Positive Design

Aimed at having green infrastructure formally recognised by Treasury as an asset class, to be valued during business case development for major federally funded projects. This would involve the development of a business case and value proposition for green infrastructure to be articulated and endorsed by Treasury, followed by the development and use of a set of evidence-based green infrastructure criteria used in business case approvals and value capture via Treasury.

AILA advocates for:

1. **Climate Positive Design** to sequester more greenhouse gas emissions than is emitted by a project over its entire lifetime and to deliver biodiversity net gain.
2. The strengthening of Legislation to tackle **biodiversity extinction** and drive the UN Convention on biodiversity - COP 15 outcomes through the protection of 30 per cent of land and water considered important for biodiversity by 2030.
3. The establishment of the **Federal Environmental Protection Agency** and the alignment of state policies with the proposed national standards.

Implementation of NSW Climate Adaptation Strategy for communities

NSW is leading the way with frameworks, policies, strategies and education to ensure the state can deliver net zero emissions by 2050.

Through the promotion of a systems-based approach to all landscape and environmental aspects of development.

AILA supports the climate responsive agenda outlined in the *NSW Climate Adaption Strategy*. In particular, circular economy initiatives placing specific emphasis on the built environment to create change and demonstrate leadership within the industry.

Emphasising the vital role that connected soil and groundwater networks play in achieving many of the targets identified in guidelines and policies. These two foundations of a **healthy green infrastructure network** have direct bearing in addressing climate change mitigation, tree canopy targets as well as microclimate control and amenity of public - communal and provide open space, amongst other influences.



Recognise Green Infrastructure as an asset class

AILA calls on the government to drive a change in accountancy, business case preparation and feasibility process standards to enable urban green community infrastructure to be formally recognised by treasury as an asset class. This will ensure appropriate consideration is given to the inclusion of green infrastructure and heritage landscapes as a critical component of major State funded projects.

Increased investment in **Living infrastructure** (Green and Blue) and commitment to long-term green finance with a focus on evidence-based decision-making will support climate positive outcomes.

Prioritise a Green Infrastructure Fund as part of a State climate resilience and recovery plan

AILA calls on the State government to establish a Green Infrastructure Investment Fund, to further support the implementation of green infrastructure projects across NSW.

This would involve a percentage of all State Government expenditure on grey infrastructure projects (e.g., roads, airports, rail, mining, and other infrastructure) to be placed in an investment fund for allocation to state and local government infrastructure projects.

Contact

We would be pleased to discuss any aspect of our positive ideas for a better NSW.

Chapter President

Tanya Wood
nsw@aila.org.au

Chapter Manager

Tessa Faucheur
0499 245 222
Tessa.faucheur@aila.org.au

Australian Institute of Landscape Architects

A Level 1, The Realm
18 National Circuit
Canberra ACT 2600
02 6198 3268

www.aila.org.au